



iEngineering
idea + intelligence + integration

iEngineering
Earthing, EMFI And Lightning
Studies Design and Consulting



enquiries@iengaust.com.au

www.iengaust.com.au

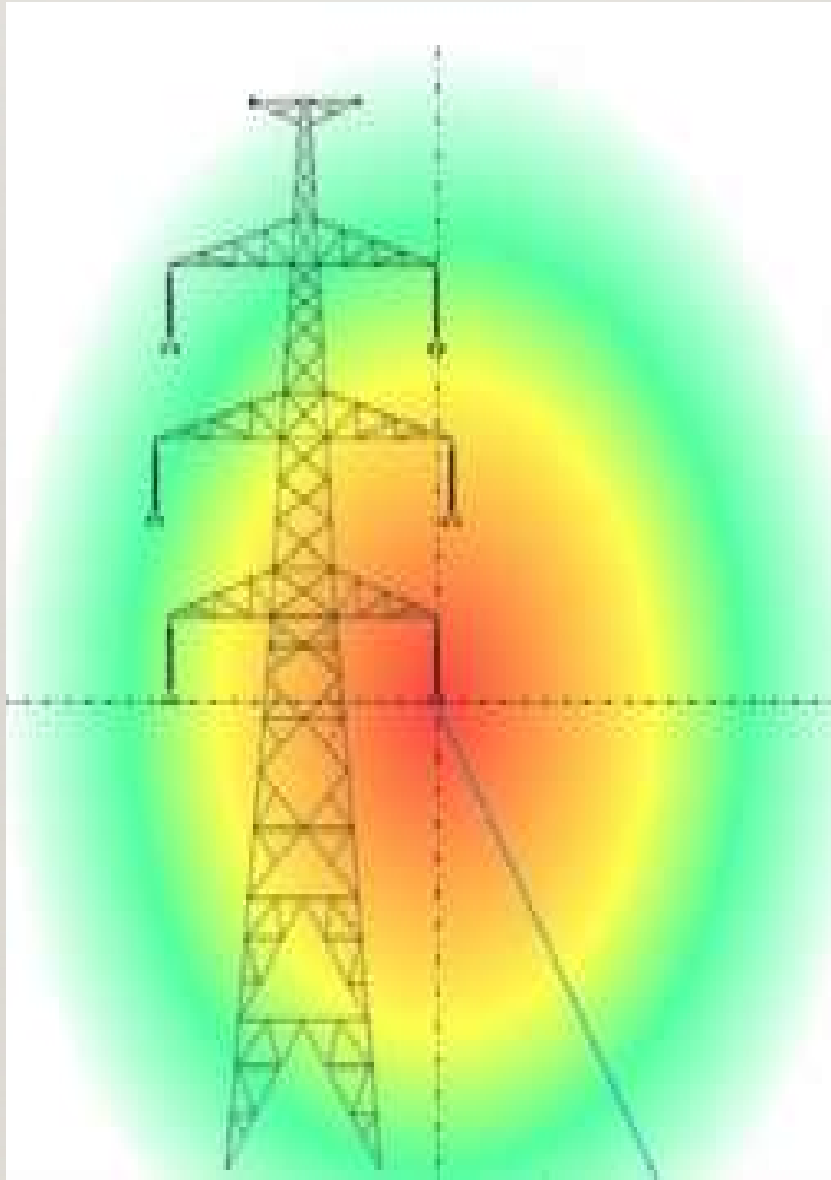
Mobile: +61 (0)467 055 252

Office: +61 (0)2 8860 9645

Fax: +61 (0)2 8277 9212

Overview:

We offer an engineering consultant service using XGSLAB. We have done a wide range of studies and consultancies all over the world. We can support you in your projects when they require special calculation consulting in the earthing EMFI and Lightning studies.



Earthing, EMFI and Lightning Studies

- ❖ Soil resistivity measurement
- ❖ Step and Touch potential
- ❖ LFI and Split study
- ❖ Earthing Studies
- ❖ EMFI Studies
- ❖ Cathodic protection
- ❖ Fault current distribution
- ❖ Lightning effects
- ❖ Earthing grid resistance testing via FOP or CIT
- ❖ Earthing grid design verification
- ❖ Official training of XGSLAB software.

